



**REGIONAL SPECIALISED METEOROLOGICAL CENTRE-TROPICAL CYCLONES, NEW DELHI
TROPICAL WEATHER OUTLOOK**

DEMS-RSMC TROPICAL CYCLONES NEW DELHI DATED 30.08.2021

TROPICAL WEATHER OUTLOOK FOR NORTH INDIAN OCEAN (THE BAY OF BENGAL OF BENGAL OF BENGAL AND ARABIAN SEA) VALID FOR NEXT 120 HOURS ISSUED AT 0600 UTC OF 30.08.2021 BASED ON 0300 UTC OF 30.08.2021.

BAY OF BENGAL:

YESTERDAYS, LOW PRESSURE AREA OVER NORTHWEST BAY OF BENGAL (BOB) AND ADJOINING WESTCENTRAL BOB OFF SOUTH ODISHA - NORTH ANDHRA PRADESH COAST MOVED INLAND AT 1200 UTC OF YESTERDAY, THE 29TH AUGUST 2021. AT 0300 UTC OF TODAY, THE 30TH AUGUST 2021 IT LAY OVER SOUTH CHHATTISGARH AND NEIGHBOURHOOD.

CONVECTION ASSOCIATED WITH THE LOW PRESSURE AREA OVER EXTREME SOUTH CHHATTISGARH AND NEIGHBOURHOOD. ASSOCIATED SCATTERED LOW AND MEDIUM CLOUDS WITH EMBEDDED MODERATE TO INTENSE CONVECTION OVER EXTREME SOUTH CHHATTISGARH - SOUTH ODISHA - NORTH COASTAL ANDHRA PRADESH AND ADJOINING TELANGANA.

SCATTERED TO BROKEN LOW AND MEDIUM CLOUDS WITH EMBEDDED INTENSE TO VERY INTENSE CONVECTION OVER BOB. SCATTERED TO BROKEN LOW AND MEDIUM CLOUDS WITH EMBEDDED MODERATE TO INTENSE CONVECTION OVER ANDAMAN SEA.

PROBABILITY OF CYCLOGENESIS (FORMATION OF DEPRESSION) DURING NEXT 120 HRS):

24 HOURS	24-48 HOURS	48-72 HOURS	72-96 HOURS	96-120 HOURS
NIL	NIL	NIL	NIL	NIL

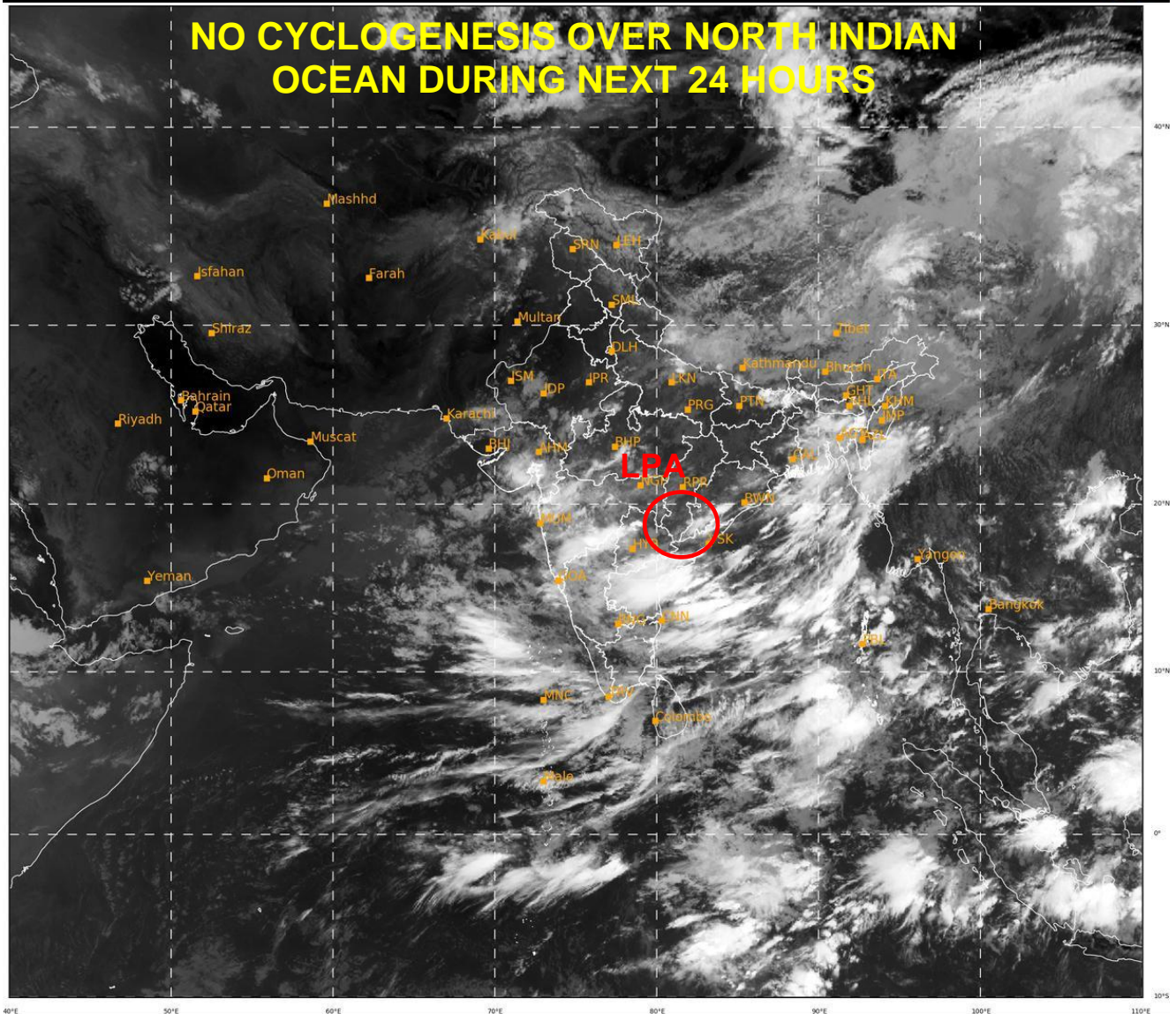
ARABIAN SEA:

SCATTERED LOW AND MEDIUM CLOUDS WITH EMBEDDED MODERATE TO INTENSE CONVECTION OVER SOUTHEAST ARABIAN SEA AND COMORIN REGION. SCATTERED LOW AND MEDIUM CLOUDS WITH EMBEDDED WEAK TO MODERATE CONVECTION OVER EASTCENTRAL ARABIAN SEA & ADJOINING NORTHEAST ARABIAN SEA AND GULF OF CAMBAY.

PROBABILITY OF CYCLOGENESIS (FORMATION OF DEPRESSION) DURING NEXT 120 HRS):

24 HOURS	24-48 HOURS	48-72 HOURS	72-96 HOURS	96-120 HOURS
NIL	NIL	NIL	NIL	NIL

REMARKS: NIL



- **LPA STANDS FOR LOW PRESSURE AREA**